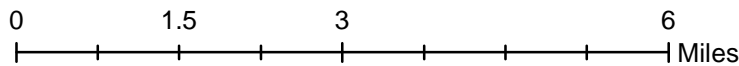
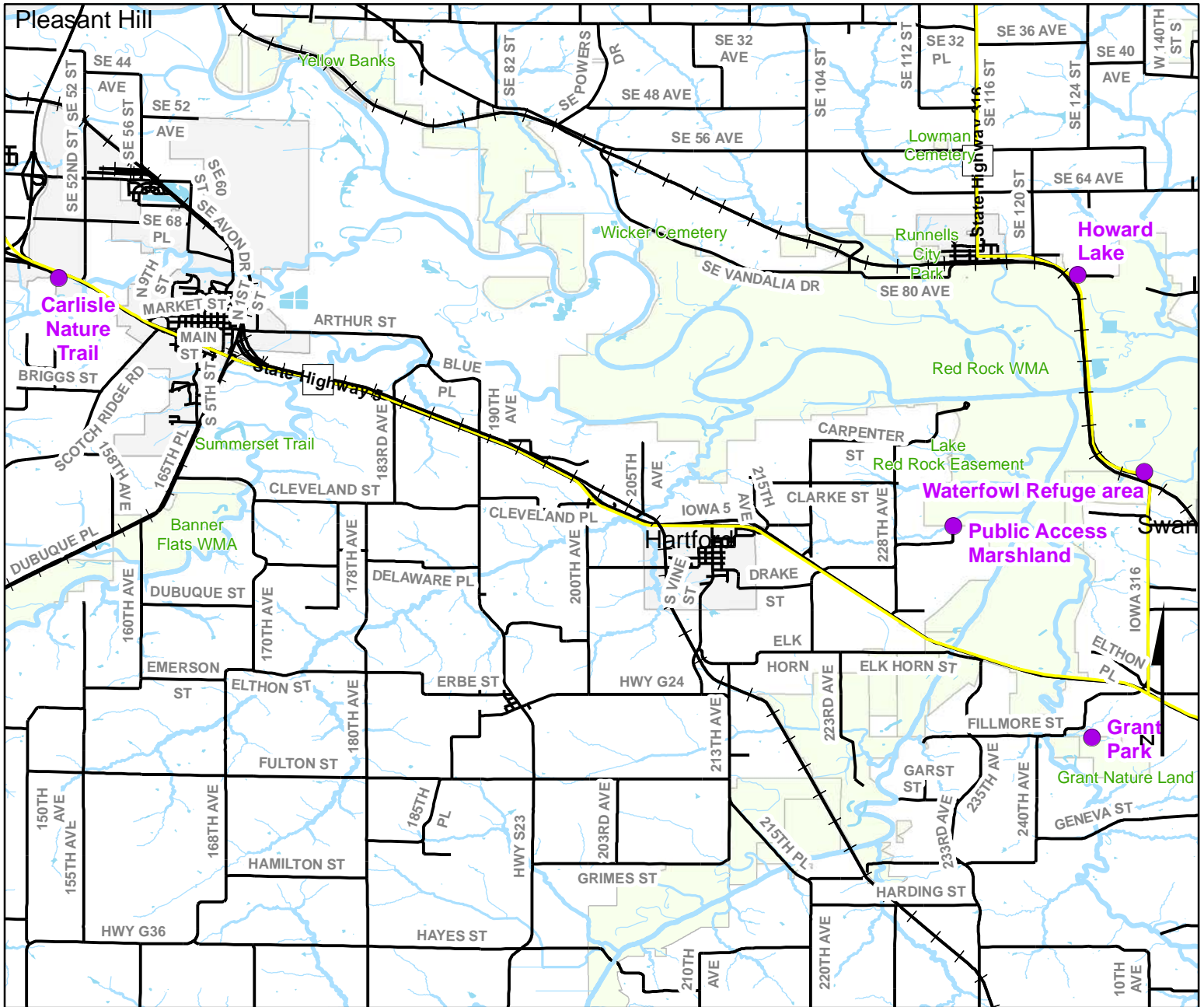


Volunteer Wildlife Monitoring Program (VWMP) Frog and Toad Survey



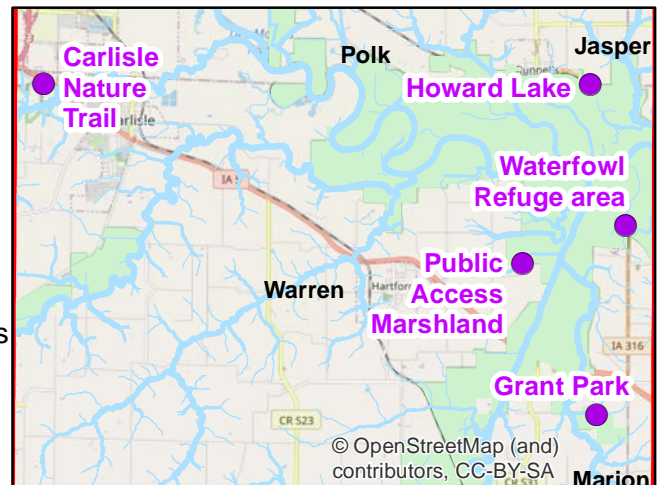
Route ID: 315 County: Warren



DNR
Volunteer Wildlife Monitoring Program

Legend

- Trails
- Survey Stops

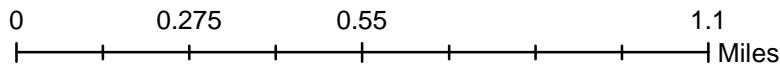
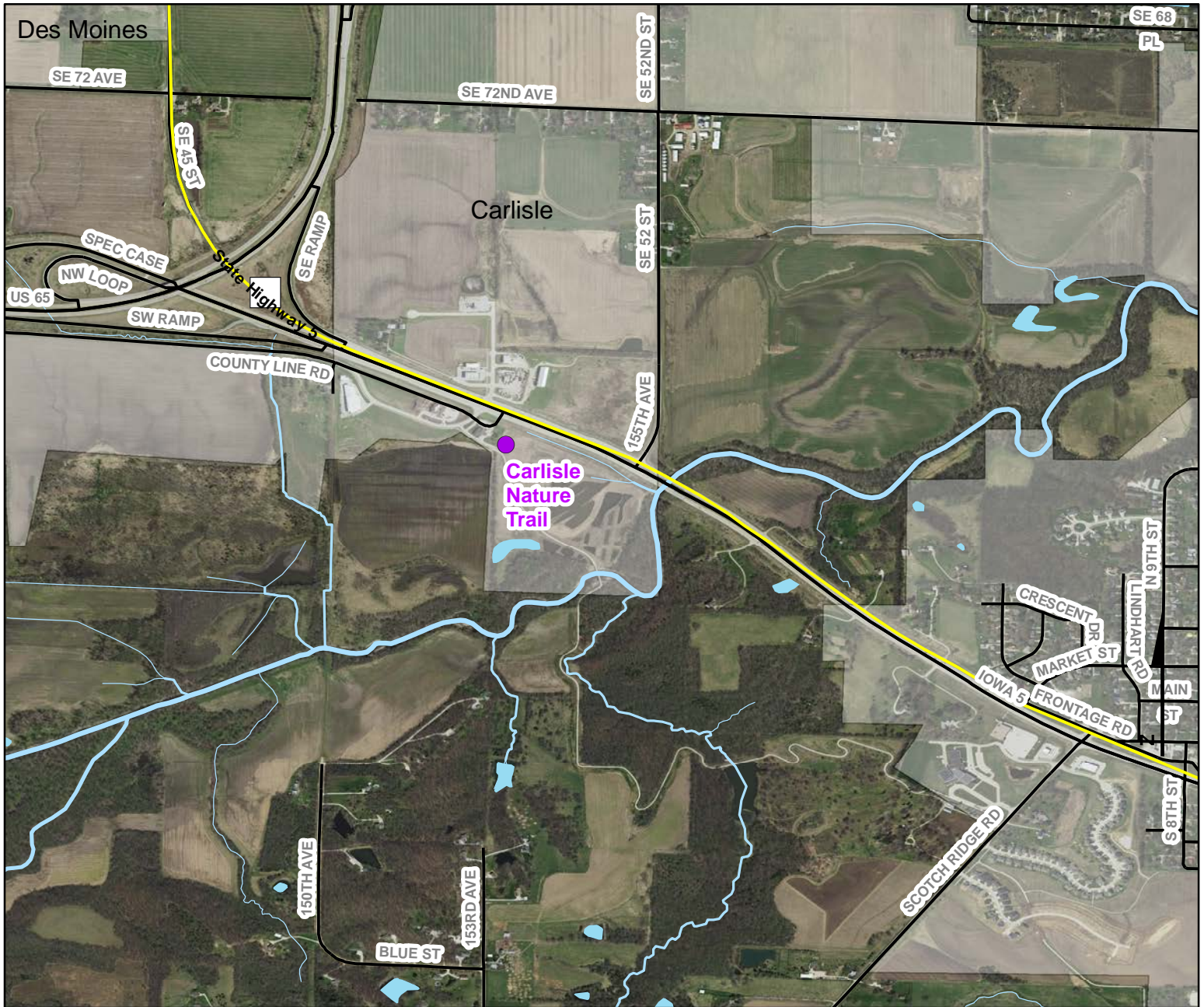


© OpenStreetMap (and contributors), CC-BY-SA

Volunteer Wildlife Monitoring Program (VWMP) Frog and Toad Survey

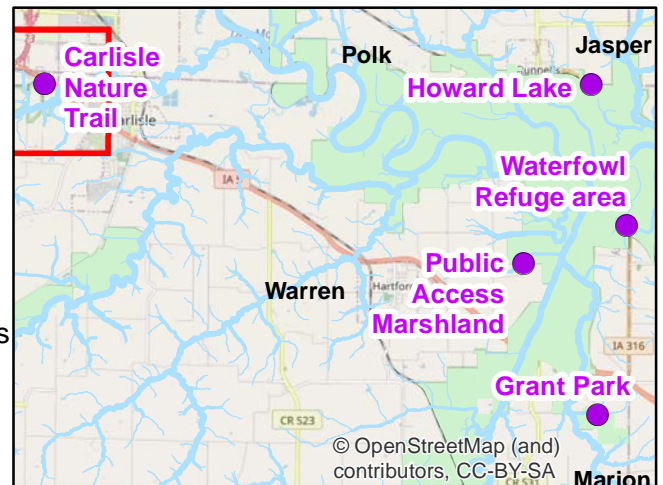


Route ID: 315 County: Warren



Legend

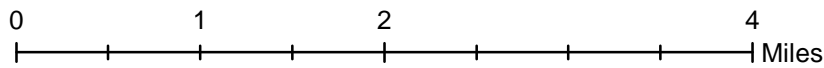
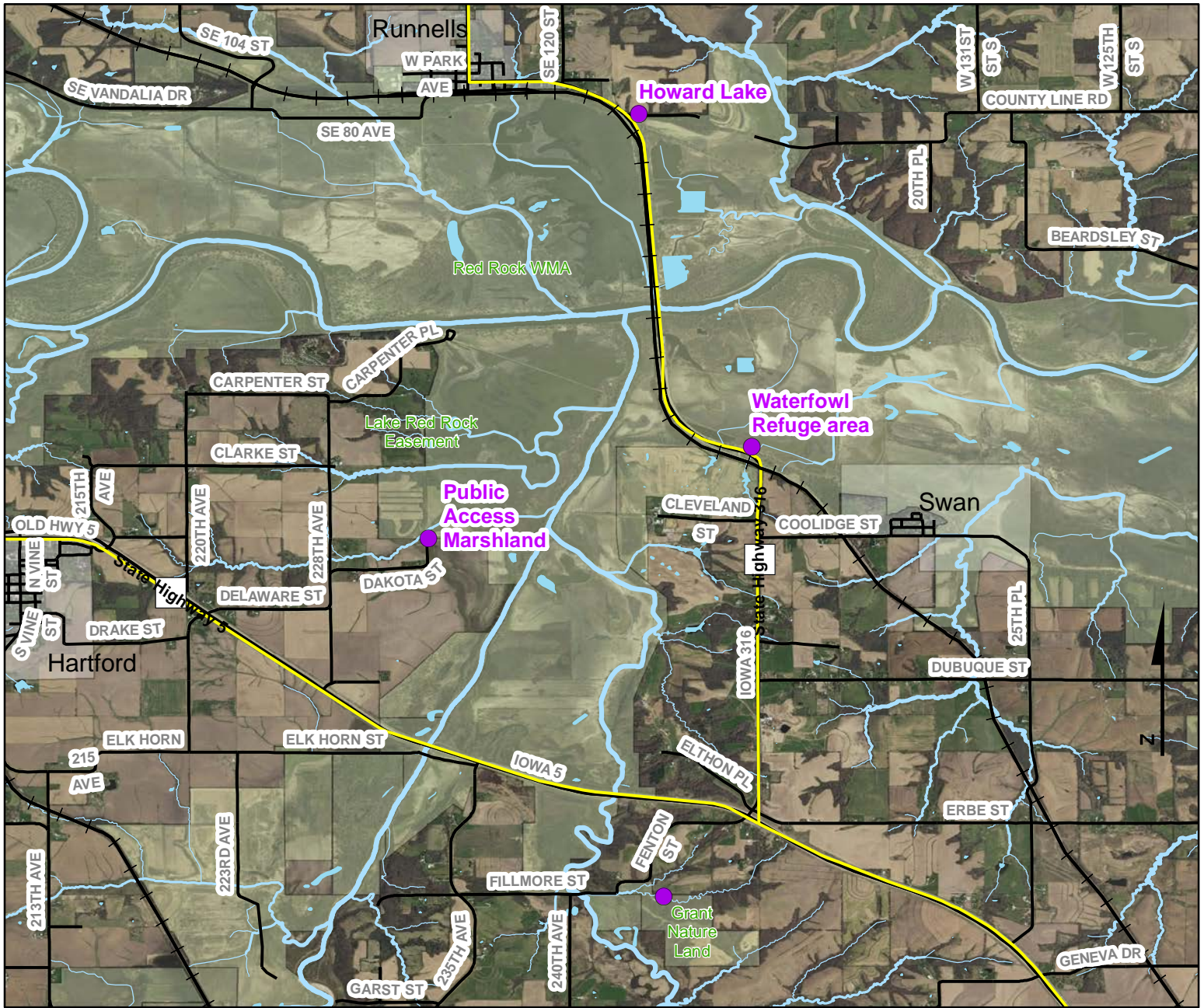
- Trails
- Survey Stops



Volunteer Wildlife Monitoring Program (VWMP) Frog and Toad Survey

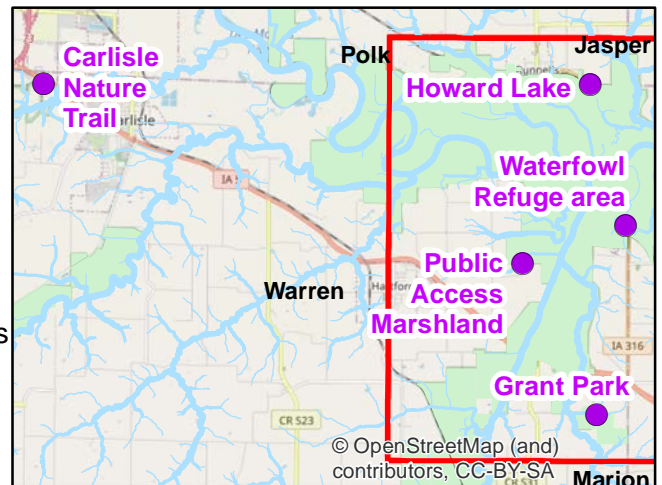


Route ID: 315 County: Warren



Legend

- Trails
- Survey Stops



Questions? Contact the VWMP Coordinator at vwmp@dnr.iowa.gov. Created on: 4/4/2023



Frog and Toad Call Survey Route Description

Route ID **315**

Established: 2023

Site Number	Name	County	Latitude	Longitude	Directions
1	Carlisle Nature Trail	Warren	41.507319	-93.514872	Small park/ open marsh at the beginning of the nature trail
2	Grant Park	Warren	41.428678	-93.337911	woodland creek and standing water in lower areas of deciduous woodland
3	Waterfowl Refuge area	Warren	41.474134	-93.328988	Wetland area
4	Howard Lake	Warren	41.507839	-93.340385	Smaller lakes opposite of Howard Lake, off road gravel access
5	Public Access Marshland	Warren	41.464893	-93.361691	